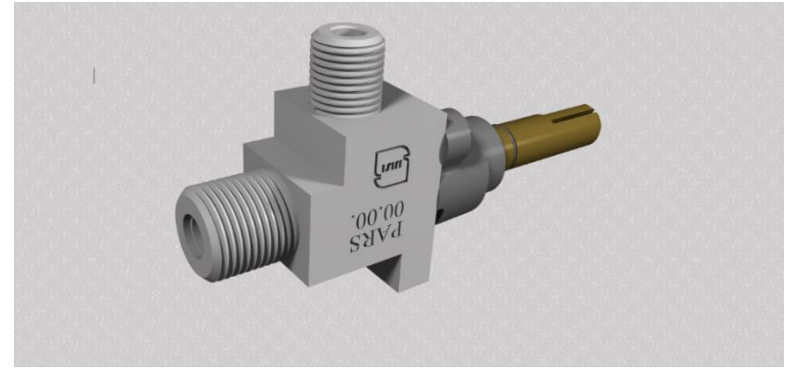




Model

Extruded aluminium gas taps without safety device – Type 1



Construction

- Body:** Extruded aluminium alloy
- Cone:** Brass
- Cap:** Die cast aluminium alloy
- Spindle:** Brass

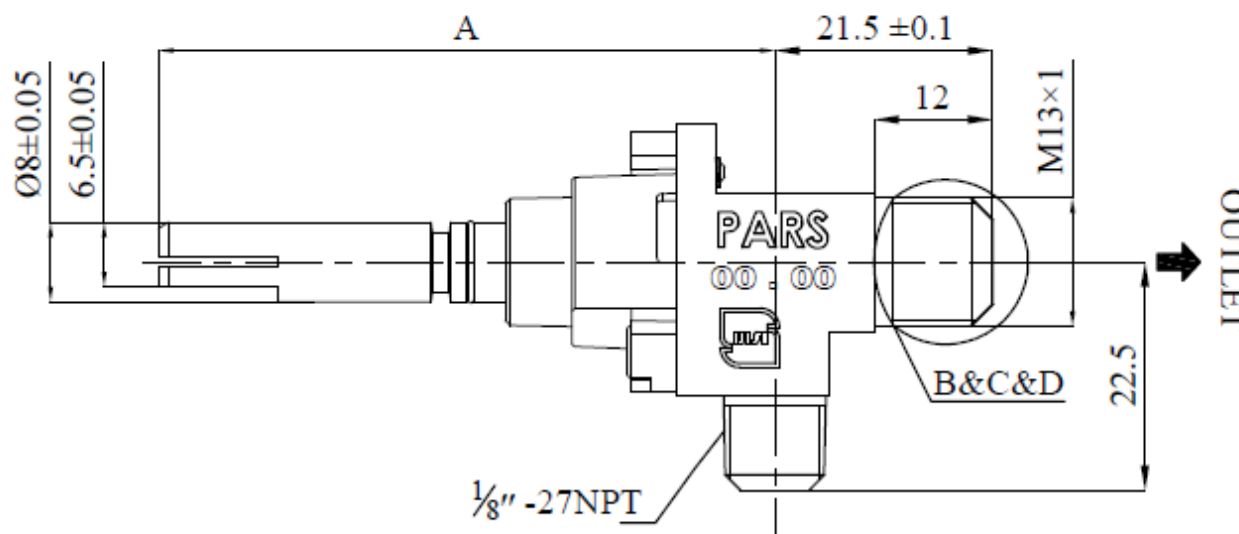
Connections

- Standard Inlet:** NPT 1/8-27 male
- Standard Outlet:** M13x1 male
- Spindle dimension:** 6.5x8 mm.
- Shape according to customer's request

Functional data

- Maximum working temperature:** 100°C
- Maximum working pressure:** 50 mbar
- Flow:** 360 l/h
- Internal leak tightness:** < 20 cc/h (at 150 mbar)
- Stroke:** 3.5 – 4 mm.

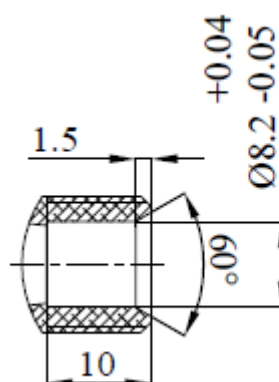
Overall dimensions



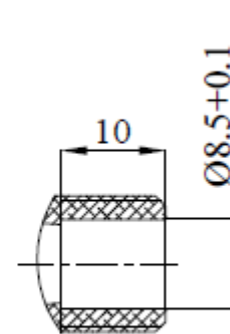
A: according to customer's request

Outlet according to customer's request

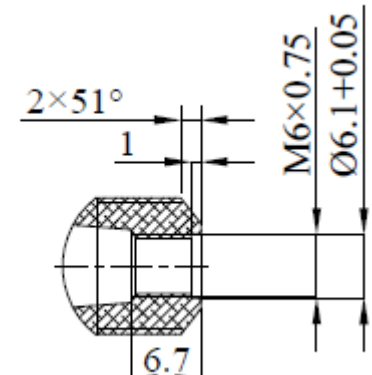
Outlet		
1	M13x1 - G 1/4	Type 1
2	M13x1 - G1/4	Type 2
3	M13x1 - G1/4	Type 3



1



2



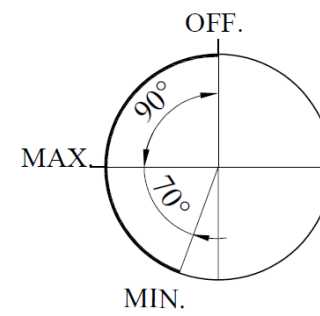
3

Brass

- Maximum inlet torque:** 15 Nm.
- Maximum outlet torque:** 15 Nm.
- Maximum injector torque:** 4 Nm.

Installation

Spindle rotation diagram



Operation sequence

