

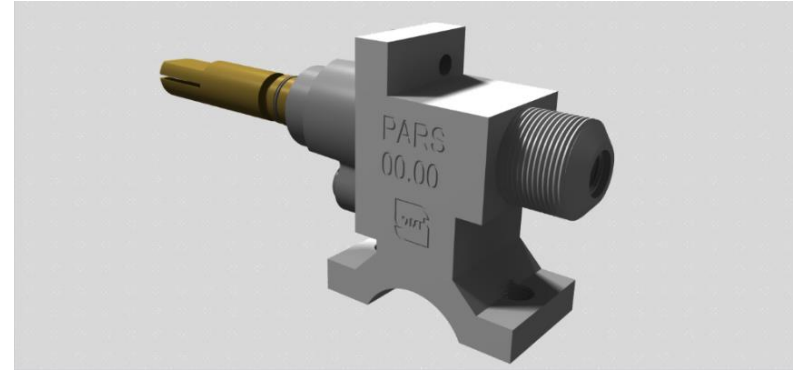


## Model

### Extruded aluminium gas taps without safety device – Type 2

#### Construction

- Body:** Extruded aluminium alloy
- Cone:** Brass
- Cap:** Die cast aluminium alloy
- Spindle:** Brass



#### Connections

- Standard Inlet:** Round 16 mm. diameter
- Standard Outlet:** M13×1 male
- Spindle dimension:** 6.5×8 mm.
- Shape according to customer's request

#### Brass

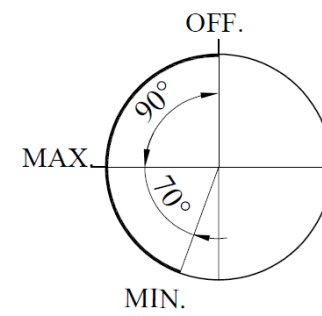
#### Installation

- Maximum inlet torque:** 1.5 Nm.
- Maximum outlet torque:** 15 Nm.
- Maximum injector torque:** 4 Nm.

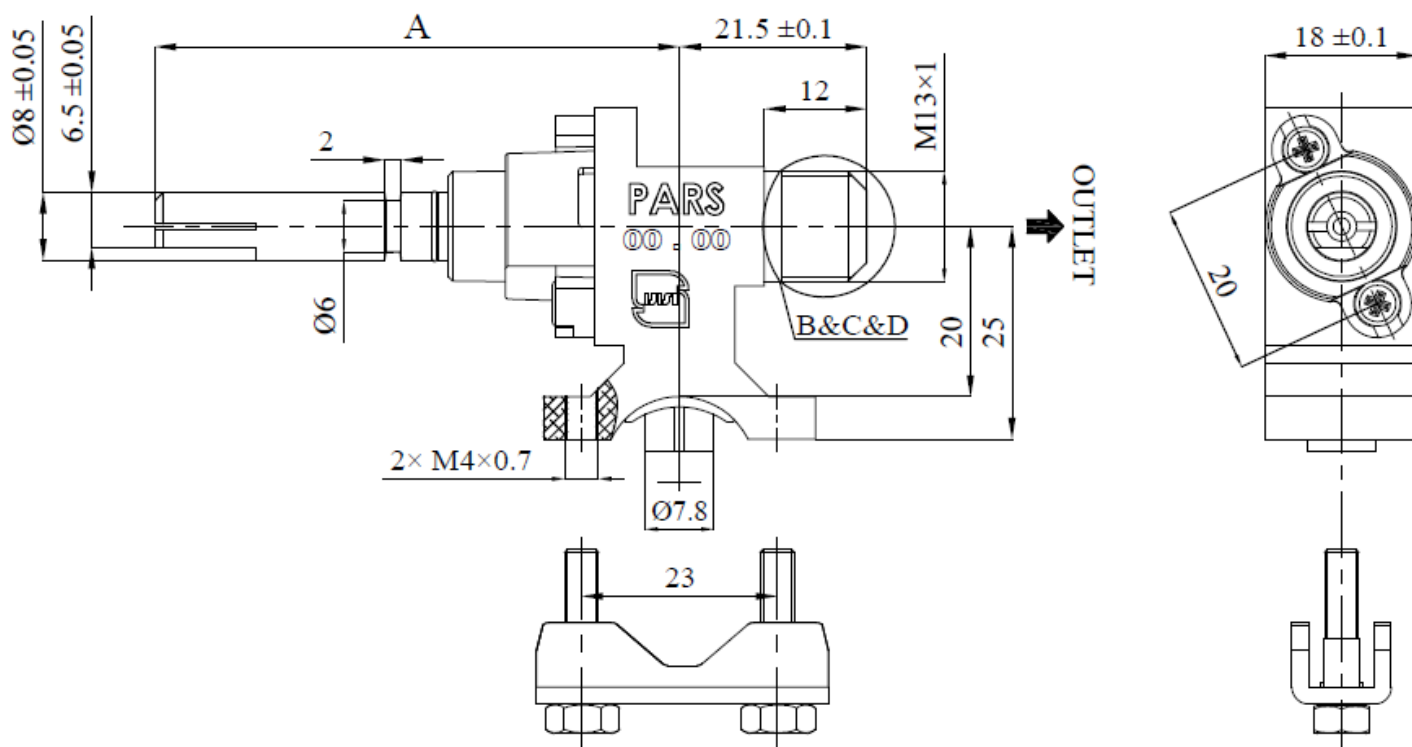
#### Functional data

- Maximum working temperature:** 100°C
- Maximum working pressure:** 50 mbar
- Flow:** 360 l/h
- Internal leak tightness:** < 20 cc/h (at 150 mbar)
- Stroke:** 3.5 – 4 mm.

#### Spindle rotation diagram



#### Overall dimensions



A : according to customer's request.

#### Operation sequence

#### Outlet according to customer's request

Outlet		
1	M13x1 - G 1/4	Type 1
2	M13x1 – G1/4	Type 2
3	M13x1 – G1/4	Type 3

